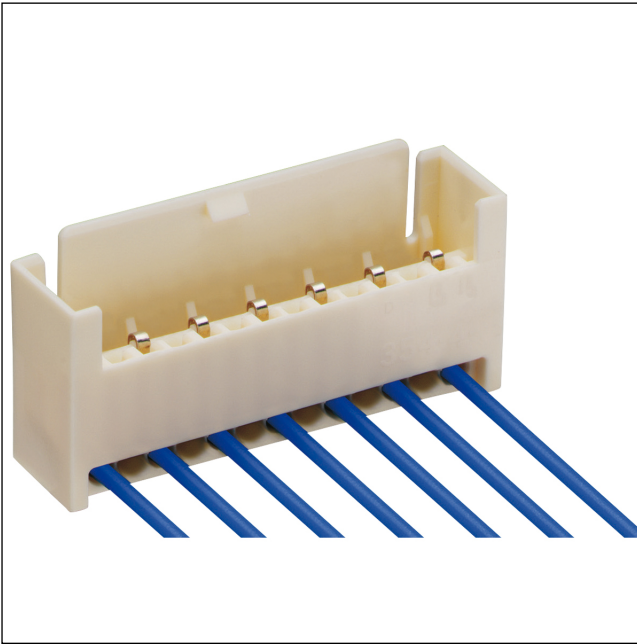


35

3542-1

RAST 2.5 connectors, pitch 2.5/5.0 mm

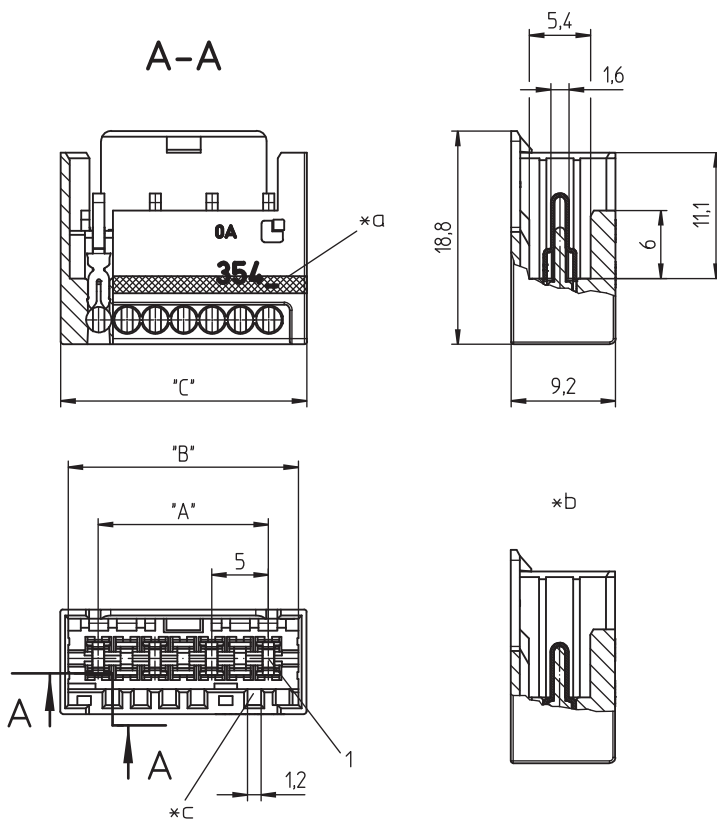


RAST 2.5 pin header, insulation displacement technology (IDT), with locking latch
contact pitch 5.0 mm

Approvals:



35 3542-1



- *a blue color marking on 3542-1 (M..)S01
- *b terminated connector
- *c keying

Environmental conditions

Temperature range -40 °C/+120 °C¹

¹ upper limit temperature (insulating body) RTI (electrical) of the UL Yellow Card

Materials

Insulating body PA GF, V-0 according to UL94 – 3542-1 M13S01¹

Contact pin CuSn, tin-plated

¹ component glow wire resistant (GWT 750 °C), testing acc. to IEC 60695-2-11, assessment acc. to IEC 60335-1 (flame < 2 s)

Mechanical data

Keying proposals at www.lumberg.com 

Connectable conductors for IDT area

Construction discrete conductor, notched flat cable 2.5 mm

Section max. 0.50 mm²

Insulation diameter ≤ 2.2 mm

Approved cables at www.lumberg.com 

Electrical data (at T_{amb} 20 °C)

Rated current 4 A (T_{amb} 60 °C, VDE)
2 A (T_{amb} 110 °C, VDE)
6 A (only with 3570..., T_{amb} 85 °C, VDE)
4 A (only with 3570..., T_{amb} 105 °C, VDE)
6 A (only with 3570..., cULus)

Rated voltage 250 V AC¹

Material group IIIa (IEC)/2 (UL) (CTI ≥ 250)¹

Creepage distance 3.8 mm






Clearance 4.0 mm

Insulation resistance > 1 GΩ

¹ according to IEC 60664/DIN EN 60664, CTI UL classification according to ANSI/UL 746A

Associated products

Counterparts

 3523  3523-2  352300
 3570  357000

Harnessing equipment

 HA3...e  HA354e-ST  HZ354
 KHP354  VARICON 7000  VARICON 7000-DC

[VARICON 7000-DC-CR](#) [VARICON 7000-Eco](#) [VARICON 7000-Eco-CR](#)
[VARICON 7000-Inline](#) [VARICON 7000-Inline-CR](#) [VARICON 7000-RD](#)
[VARICON 7000-RD-CR](#)

Designation	Pole Number	PU (Pieces)	MDQ (Pieces)	Dimensions		
				A (mm)	B (mm)	C (mm)
3542-102	2	500	1000	5	10.1	11.7
3542-103	3	500	1000	10	15.1	16.7
3542-104	4	500	1000	15	20.1	21.7
3542-105	5	500	1000	20	25.1	26.7
3542-106	6	500	1000	25	30.1	31.7
3542-107	7	500	1000	30	35.1	36.7
3542-108	8	500	1000	35	40.1	41.7
3542-109	9	500	1000	40	45.1	46.7
3542-110	10	500	1000	45	50.1	51.7

Designation to be completed by further details (e.g. for keying, color or material options).

Packaging:

in bulk, in a cardboard box – in bar stock carriers upon request